

## **UC Irvine**

### **Western Journal of Emergency Medicine: Integrating Emergency Care with Population Health**

#### **Title**

Definitely NOT Just Another Hernia

#### **Permalink**

<https://escholarship.org/uc/item/6ff9q71r>

#### **Journal**

Western Journal of Emergency Medicine: Integrating Emergency Care with Population Health, 13(6)

#### **ISSN**

1936-900X

#### **Authors**

Hipskind, John E  
Burg, Mike D

#### **Publication Date**

2012

#### **DOI**

10.5811/westjem.2012.4.12319

#### **Copyright Information**

Copyright 2012 by the author(s). This work is made available under the terms of a Creative Commons Attribution-NonCommercial License, available at <https://creativecommons.org/licenses/by-nc/4.0/>

Peer reviewed

## Definitely NOT Just another Hernia

John E. Hipskind, MD  
Michael D. Burg, MD

Kaweah Delta Medical Center, Department of Emergency Medicine, Visalia, California

Supervising Section Editor: Sean O. Henderson, MD

Submission history: Submitted April 6, 2012; Accepted April 16, 2012

Full text available through open access at [http://escholarship.org/uc/uciem\\_westjem](http://escholarship.org/uc/uciem_westjem)

DOI: 10.5811/westjem.2012.4.12319

[West J Emerg Med. 2012;13(6):492-493]

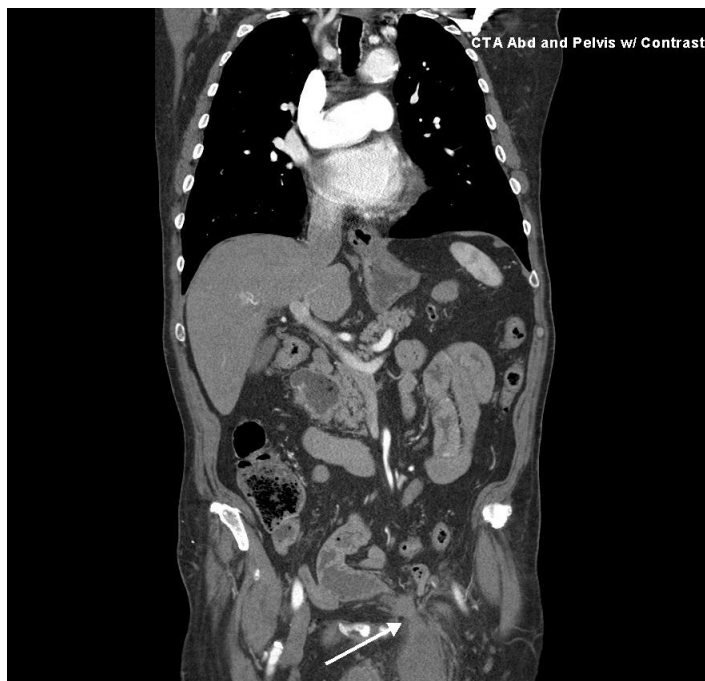
A 77-year-old male presented to our emergency department (ED) with a 3-hour history of acute severe lower abdominal pain, inability to void, a swollen scrotum, and one episode of vomiting. His relevant past medical history included: hypertension, diabetes mellitus, and distant right inguinal hernia repair. Vital signs were: 96.4° F, 101, 22, and 205/90. Examination revealed a normal abdomen and an irreducible left inguinal hernia. Foley catheter placement yielded a scant amount of infected urine that stopped flowing almost immediately and did not resume despite catheter flushing and repositioning. Additional laboratory data did not identify the cause of the patient's symptoms. An abdominopelvic computed tomography (CT) was performed (Figures 1 and 2) after which the patient underwent emergent operative reduction of his incarcerated scrotal cystocele.

Complete bladder herniation into an inguinal hernia sac is referred to as a scrotal cystocele. This very rare condition is

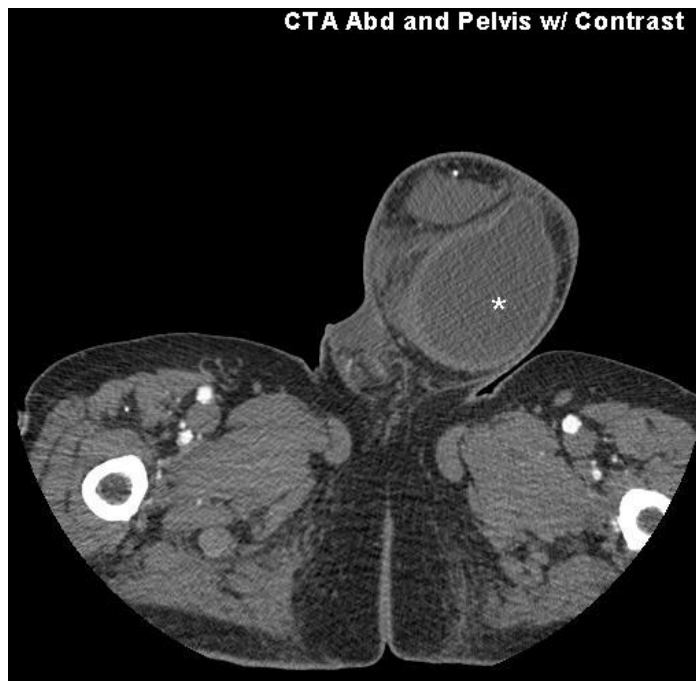
previously unreported in the emergency medicine literature. Some bladder involvement occurs in 1 - 4% of all inguinal hernias<sup>1</sup> and is often an incidental (generally benign) operative finding. Patients with partial bladder herniation may report "double phase micturition." This occurs when the patient voids then passes more urine by applying pressure to their hernia.<sup>2</sup>

Scrotal cystocele can be associated with bilateral hydronephrosis, acute renal failure, bladder lithiasis and necrosis, vesicoureteral reflux, and scrotal abscess.<sup>1</sup> This inherently serious condition mimics the far more common inguinal hernia containing fat or bowel. Risk factors include: patients over 50 years of age, males, and obesity. ED ultrasound may strongly suggest or confirm the diagnosis. CT is definitive.

Due to its associated morbidity, emergency physicians should consider scrotal cystocele in males with obstructive uropathy and an associated inguinal hernia.



**Figure 1.** Scrotal cystocele-transverse view. Bladder entering inguinal canal. Arrow marks focal volvulus.



**Figure 2.** Asterisk marks distal obstructed bladder.

**ACKNOWLEDGEMENTS**

Aaron Berkey, MD, Department of Radiology Jason Hulsey,  
PACS Network Coordinator

---

*Address for Correspondence:* John E. Hipskind MD,  
Department of Emergency Medicine, Kaweah Delta Medical  
Center, 400 West Mineral King Ave, Visalia, CA 93291.  
E-mail: johnhipskind@sbcglobal.net.

---

*Conflicts of Interest:* By the WestJEM article submission agreement, all authors are required to disclose all affiliations, funding sources and financial or management relationships that could be perceived as potential sources of bias. The authors disclosed none.

**REFERENCES**

1. Bisharat M, O'Donnell ME, Thompson T, et al. Complications of inguinoscrotal bladder hernias: a case series. *Hernia*. 2009; 13:81-4.
2. Papadimitriou SH, Chlepas MA, Kokinacos CP, et al. Massive scrotal cystocele with bladder cancer. *Br J Urol*. 1991; 67:330-331.