

## **UC Irvine**

### **Western Journal of Emergency Medicine: Integrating Emergency Care with Population Health**

#### **Title**

Sponsors and Advertising

#### **Permalink**

<https://escholarship.org/uc/item/849040ch>

#### **Journal**

Western Journal of Emergency Medicine: Integrating Emergency Care with Population Health, 15(7)

#### **ISSN**

1936-900X

#### **Author**

Pham, Kevin

#### **Publication Date**

2014

#### **Copyright Information**

Copyright 2014 by the author(s). This work is made available under the terms of a Creative Commons Attribution-NonCommercial License, available at

<https://creativecommons.org/licenses/by-nc/4.0/>

Peer reviewed

# Western Journal of Emergency Medicine:

## Integrating Emergency Care with Population Health

This open access publication would not be possible without the generous and continual support of our society, chapter, and department sponsors.

### Professional Society Sponsors

AMERICAN COLLEGE OF OSTEOPATHIC EMERGENCY PHYSICIANS

CALIFORNIA CHAPTER OF THE  
AMERICAN ACADEMY OF EMERGENCY MEDICINE

CALIFORNIA CHAPTER OF THE  
AMERICAN COLLEGE OF EMERGENCY PHYSICIANS

### Academic Department Sponsors

ADVOCATE CHRIST MEDICAL  
CENTER  
OAK LAWN, IL

AMERICAN UNIVERSITY OF  
BEIRUT  
BEIRUT, LEBANON

BAYLOR COLLEGE OF MEDICINE  
HOUSTON, TX

BAYSTATE MEDICAL CENTER/  
TUFTS UNIVERSITY  
SPRINGFIELD, MA

BOSTON MEDICAL CENTER  
BOSTON, MA

BROWN UNIVERSITY  
PROVIDENCE, RI

CARL R. DARNALL MEDICAL  
CENTER  
FORT HOOD, TX

EASTERN VIRGINIA MEDICAL  
SCHOOL  
NORFOLK, VA

EMORY UNIVERSITY  
ATLANTA, GA

FLORIDA HOSPITAL MEDICAL  
CENTER  
ORLANDO, FL

GOOD SAMARITAN HOSPITAL  
MEDICAL CENTER  
WEST ISLIP, NY

HENRY FORD MEDICAL CENTER  
DETROIT, MI

INTEGRIS HEALTH  
OKLAHOMA CITY, OK

KAWEAH DELTA HEALTHCARE  
DISTRICT  
VISALIA, CA

KENNEDY UNIVERSITY HOSPITALS\*  
TURNERSVILLE, NJ

KERN MEDICAL CENTER  
BAKERSFIELD, CA

LAKELAND HEALTHCARE  
ST. JOSEPH, MICHIGAN

LEHIGH VALLEY HOSPITAL AND  
HEALTH NETWORK  
ALLENTOWN, PA

MADIGAN ARMY MEDICAL  
CENTER  
TACOMA, WA

MAIMONIDES MEDICAL CENTER\*  
BROOKLYN, NY

MARICOPA MEDICAL CENTER  
PHOENIX, AZ

MASSACHUSETTS GENERAL  
HOSPITAL  
BOSTON, MA

NORTH SHORE UNIVERSITY HOSPITAL  
MANHASSET, NY

OKLAHOMA UNIVERSITY  
NORMAN, OK

REGIONS HOSPITAL/ HEALTH PARTNERS  
INSTITUTE FOR EDUCATION AND  
RESEARCH  
ST. PAUL, MN

RESURRECTION MEDICAL CENTER\*  
CHICAGO, IL

ROBERT WOOD JOHNSON HOSPITAL\*  
NEW BRUNSWICK, NJ

SOUTHERN ILLINOIS UNIVERSITY  
CARBONDALE, IL

STANFORD UNIVERSITY  
PALO ALTO, CA

SUNY DOWNSTATE MEDICAL CENTER  
NEW YORK CITY, NY

TEMPLE UNIVERSITY  
PHILADELPHIA, PA

UNIVERSITY OF ARIZONA  
TUCSON, AZ

UNIVERSITY OF CALIFORNIA DAVIS\*  
DAVIS, CA

UNIVERSITY OF CALIFORNIA IRVINE\*  
ORANGE, CA

UNIVERSITY OF CALIFORNIA SAN  
DIEGO

UNIVERSITY OF CALIFORNIA SAN  
LA JOLLA, CA

UNIVERSITY OF CALIFORNIA SAN  
FRANCISCO  
SAN FRANCISCO, CA

UNIVERSITY OF CALIFORNIA SAN  
FRANCISCO FRESNO  
FRESNO, CA

UNIVERSITY OF FLORIDA  
JACKSONVILLE, FL

UNIVERSITY OF ILLINOIS AT CHICAGO  
CHICAGO, IL

UNIVERSITY OF LOUISVILLE  
LOUISVILLE, KY

UNIVERSITY OF MARYLAND  
COLLEGE PARK, MD

UNIVERSITY OF NEVADA  
LAS VEGAS, NV

UNIVERSITY OF SOUTHERN  
CALIFORNIA/KECK SCHOOL OF  
MEDICINE  
LOS ANGELES, CA

UNIVERSITY OF TEXAS, HOUSTON  
HOUSTON, TX

UNIVERSITY OF UTAH  
SALT LAKE CITY, UT

UPSTATE MEDICAL CENTER  
SYRACUSE, NY

*\*denotes department & residency sponsor*

### Professional Chapter Sponsor

FLORIDA CHAPTER OF THE  
AMERICAN ACADEMY OF EMERGENCY MEDICINE

NEVADA CHAPTER OF THE  
AMERICAN ACADEMY OF EMERGENCY MEDICINE

MISSOURI CHAPTER OF THE  
AMERICAN ACADEMY OF EMERGENCY MEDICINE

TENNESSEE CHAPTER OF THE  
AMERICAN ACADEMY OF EMERGENCY MEDICINE

UNIFORMED SERVICES CHAPTER OF THE  
AMERICAN ACADEMY OF EMERGENCY MEDICINE

VIRGINIA CHAPTER OF THE  
AMERICAN ACADEMY OF EMERGENCY MEDICINE

### International Society Partners

SOCIEDAD ARGENTINA DE EMERGENCIAS

SOCIEDAD CHILENO MEDICINA URGENCIA

THAI ASSOCIATION FOR EMERGENCY MEDICINE

EMERGENCY MEDICINE ASSOCIATION OF TURKEY

Become a *WestJEM* departmental sponsor, waive article processing fees, receive print/electronic copies, and free CME advertisement space at [www.calaaem.org/westjem/request-a-subscription](http://www.calaaem.org/westjem/request-a-subscription) or contact:

Emily DeVillers  
Cal/AAEM: WestJEM  
Phone: (800) 884-2236  
EDeVillers@aaem.org

or

Shahram Lotfipour, MD, MHPE  
Managing Associate Editor  
Phone: (714) 456-2326  
Shahram.Lotfipour@uci.edu



# The ACOEP Advantage

*Specialized. Personalized.*

For over 35 years, the ACOEP Advantage has provided emergency physicians with educational opportunities, career advancement, and the tools to achieve their goals. ACOEP's comparatively smaller size is a large part of what makes membership more valuable!

ACOEP members and conference attendees enjoy:

- Greater access to ACOEP leadership and decision-makers
- More opportunities to participate in leadership roles at a national level
- National conferences tailored to the specific needs of our members
- More face time with recruiters, industry leaders, and political advocates

Join us and see for yourself what the ACOEP Advantage is all about!

## Mark your calendars for these conferences:

***The Edge: Intense Review 2015***

***The Edge: Oral Board Review 2015***

January 13-19, 2015

Westin River North

Chicago, IL

***The Edge: Spring Seminar 2015***

April 7-11, 2015

Marriott Harbor Beach

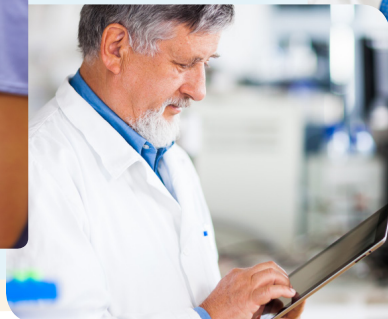
Ft. Lauderdale, FL

***The Edge: Scientific Assembly 2015***

October 18-21, 2015

Loews Portofino Bay

Universal, Orlando, FL



Visit [www.acoep.org](http://www.acoep.org) for more information



Open Access at [www.WestJEM.com](http://www.WestJEM.com) & [www.WestJEM.org](http://www.WestJEM.org)

*Western Journal of Emergency Medicine*  
Integrating Emergency Care with Population Health

## FOLLOW US ON



@WestJEM



Western Journal of  
Emergency Medicine

[www.westjem.com](http://www.westjem.com)



*A Peer-Reviewed, International Professional Journal*

# WestJEM

Integrating Emergency Care with Population Health

WestJEM is proud to announce the launch of our **free** electronic Academic Job Board posted on our website:

[www.WestJEM.com](http://www.WestJEM.com)

*Please click on the Job Board tab to see a sample of posted advertisements.*

Please send your 300 dpi PDF advertisement with the duration of job posting/end date and link to contact person in your advertisement to [jobboard@westjem.org](mailto:jobboard@westjem.org)  
(Limit one posting per PDF)

*We look forward to serving the academic community with this free and vital service.*



# 38<sup>TH</sup> ANNUAL EMERGENCY MEDICINE IN YOSEMITE

*January 14 – 17, 2015*

Register online:  
[www.yosemitemef.org](http://www.yosemitemef.org)

Sponsored by Yosemite Medical Education Foundation (YMEF)  
Co-Sponsored by CaliforniaACEP

# 5<sup>th</sup> Annual *National Update on Behavioral Emergencies*

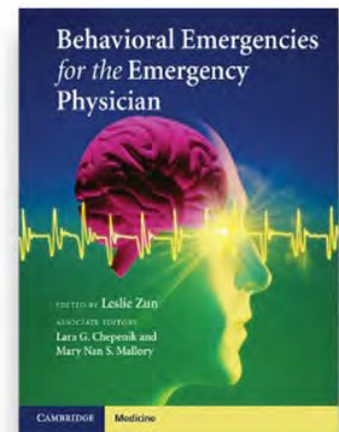
## Tentative Agenda (Day 1- Thursday Dec 11)

Working with Law Enforcement  
What is New in Medical Clearance  
Suicide and Substance Use  
Deadly Disorders in Psychiatric  
New Drugs of Abuse  
Difficult Behavioral Disorders  
Excited Delirium  
Pediatric Psychiatric Illness  
Case Management in the Emergency  
Intellectually and DD  
Geropsychiatric Issues  
Medication Update  
Appropriate Treatments in the ED/PES  
Agitation Tx Delirium and Dementia  
New Treatments for Agitation  
Successful Restraint Reduction  
Who Can Go Home with Suicide  
Dealing with Psychiatric Boards

## Tentative Agenda (Day 2- Dec 12)

Reduction of Frequent Users  
Working with EMS  
Role of Community Mental Health  
Nursing Issues of Caring for Behavioral Emergencies  
Mobile Care and Crisis Management  
Training in Behavioral Emergencies  
Medical Records in HIE  
Legislative issues  
Wall Time Collaborative  
Models of Care  
ED Tool Kit  
Billing and Reimbursement  
EMTALA  
Scientific Session

Every registrant receives a copy of the textbook



All Full Registrations Include a Copy of Behavioral Emergencies for the Emergency Physician

Pre-Conference Course on Dec 10th Sponsored by IBHI  
Improving Emergency Department Care and Managing Throughput for Behavioral Health Patients

CME Approved for ACEP Category 1  
CEUs for RNs, PAs & SWs are currently pending application.

Registration Fees \$545 in advance  
\$645 at the conference.  
Reduced fee for residents and students

Trena Burke, Conference Manager  
Phone: 773-257-6589  
E-mail: burtr@sinai.org

## Invited Speakers

David Hnatow	Scott Zeller
Lisa Caoiccia	Rachel Glick
Kim Nordstrom	Eric Katz
Frank Lovecchio	Lara Chepenik
Lara Chepenik	Eddie Markul
Gary Vilke	Ken Thompson
Joanna Kowalik	Anne Maton
Sheri Richardt	Pablo Sadler
Jennifer Walthall	Kurt Isenberger
Seth Powsner	James Killeen
Jack Rozel	Richard McKeon
Jon Berlin	B Bartleson
Silavana Riggio	Junji Takeshita
Michael Wilson	Richard Wild

## Course Director Leslie Zun, MD, MBA

### Endorsements

**Sinai Health System**  
**The Chicago Medical School**  
**American Association for  
Emergency Psychiatry**

[www.behavioralemergencies.com](http://www.behavioralemergencies.com)

\*This continuing nursing education activity is being awarded for 15 contact hours by Mount Sinai Health System (OH-401, 08/31/2015) an approved provider of continuing nursing education by the Ohio Nurses Association (OBN-001-91), an accredited approver by the American Nurses Credentialing Center's Commission on Accreditation



## JOINT CONGRESS



MEDITERRANEAN  
EMERGENCY MEDICINE CONGRESS

GREAT NETWORK  
CONGRESS

FOCUS ON INNOVATIONS AND TRANSLATIONAL  
RESEARCH IN EMERGENCY MEDICINE

**SEPTEMBER 4-9, 2015 ROME, ITALY**

The VIII<sup>th</sup> MEMC is jointly organized by the American Academy of Emergency Medicine (AAEM), the Global Research on Acute Conditions Team (GREAT) Network & the Mediterranean Academy of Emergency Medicine (MAEM). In conjunction with the GREAT 2015 Annual Conference — organized by the GREAT Network.



Call for Papers  
2015 *Academic Emergency Medicine* Consensus Conference

**Diagnostic Imaging in the Emergency Department:  
A Research Agenda to Optimize Utilization**

The 2015 *Academic Emergency Medicine* (AEM) consensus conference, **Diagnostic imaging in the emergency department: A research agenda to optimize utilization** will be held on May 12, 2015, immediately preceding the SAEM Annual Meeting in San Diego, CA. Original papers on this topic, if accepted, will be published together with the conference proceedings in the December 2015 issue of *AEM*.

Diagnostic imaging is integral and beneficial to the practice of emergency medicine. Over the last several decades, emergency department (ED) diagnostic imaging has increased without a commensurate rise in identified pathology or improvement in patient-centered outcomes. Unnecessary imaging results in increased resource use and significant exposure risks. ED diagnostic imaging has become the focus of many stakeholders, including patients and various regulatory agencies. This multidisciplinary consensus conference represents the first coordinated effort to further our evidence-based knowledge of ED diagnostic imaging. This consensus conference will formulate the research priorities for emergency diagnostic imaging, initiate a collaborative dialogue between stakeholders, and align this research agenda with that of federal funding agencies.

**Consensus Goal:**

The overall mission of the 2015 *AEM* consensus conference will be to create a prioritized research agenda in emergency diagnostic imaging for the next decade and beyond. The consensus conference will feature expert keynote speakers, panel discussions including nationally recognized experts, and facilitated breakout group sessions to develop consensus on research agendas by topic. Optimizing diagnostic imaging in the ED is a timely topic that is relevant to all who practice emergency medicine. Furthermore, the conference content spans many other specialties (e.g. radiology, pediatrics, cardiology, surgery, internal medicine), all of which will be invited to participate in the conference to optimize the agenda and for future collaboration in order to improve emergency diagnostic imaging use.

**Consensus Objectives:**

1. Understand the current state of evidence regarding diagnostic imaging utilization in the ED and identify opportunities, limitations, and gaps in knowledge of previous study designs and methodology
2. Develop a consensus statement that emphasizes the priorities and opportunities for research in emergency diagnostic imaging that will result in practice changes, and the most effective methodologic approaches to emergency diagnostic imaging research
3. Explore and improve knowledge of specific funding mechanisms available to perform research in emergency diagnostic imaging

Accepted manuscripts will present original, high-quality research in emergency diagnostic imaging in areas such as clinical decision rules, shared decision making, knowledge translation, comparative effectiveness research, and multidisciplinary collaboration. They may include work in clinical/translational, health systems, policy, or basic sciences research. Papers will be considered for publication in the December 2015 issue of *AEM* if received by April 17, 2015. All submissions will undergo peer review and publication cannot be guaranteed.

For queries, please contact Jennifer R. Marin, MD, MSc ([jennifer.marin@chp.edu](mailto:jennifer.marin@chp.edu)) or Angela M. Mills, MD ([millsa@uphs.upenn.edu](mailto:millsa@uphs.upenn.edu)) the 2015 consensus conference co-chairs. Information and updates will be regularly posted in *AEM*, the SAEM Newsletter, and the journal and SAEM websites.

CEP America's culture of caring puts the patient first. Outstanding collaboration and world-class practice support sets us apart.



“

Working for CEP America allows me to just take care of my patients, one-on-one. Patients come first.

”

—DOUG BROSINAN, MD

Emergency Medicine Partner, Sutter Roseville Medical Center

For information on a career with CEP America, visit us at  
[go.cep.com/collaboration](https://go.cep.com/collaboration)

“

With CEP America I can stay true to my mission to provide patient-centered and compassionate care.

”

—ANNA GELBERG, MD

Hospitalist Partner, Palomar Medical Center



**CEP**  
America®

Your Life. Your Career. Your Partnership.



# SAVE THE DATE



**CALIFORNIA ACEP**  
AMERICAN COLLEGE OF EMERGENCY PHYSICIANS

## 2015 Conferences

**APRIL 21, 2015**

**LEGISLATIVE LEADERSHIP CONFERENCE // Sacramento**

**JUNE 12, 2015**

**ANNUAL ASSEMBLY // Los Angeles/Universal City**

