

UC Berkeley

Places

Title

Contributors 13:3

Permalink

<https://escholarship.org/uc/item/8jz8g91f>

Journal

Places, 13(3)

ISSN

0731-0455

Publication Date

2000-12-01

Peer reviewed

Gerald Allen is principal of Gerald Allen & Jeffrey Harbison, Architects, in New York City. He is co-author of *The Place of Houses*, with Donlyn Lyndon and Charles Moore. He has taught at numerous U.S. universities and has published widely in general-interest journals. He studied architecture at Yale.

George L. Clafien, Jr., FAIA, is a professor of architecture at Temple University and a practicing architect in Philadelphia. Educated at the Massachusetts Institute of Technology and University of Pennsylvania, he is interested in developing critical studies of Modernist urban design. He has contributed to reviews and forums on Independence Mall designs since 1996.

Maria Cox lives in New York, where she studied at the Art Students League and the School of Visual Arts. She makes portraits and, on her travels, photographs golf courses for a book project, "The Landscape of Golf."

John Douglas, AIA, ASLA, is an architect and landscape architect who practices in Scottsdale, Arizona. The focus of his work is the renovation of structures, both historic and modern, that exemplify the concept of living within the Sonoran desert. Currently, he is involved with the expansion of The Heard Museum and the renovation of Old Main at Arizona State University, as well as expansions of Phoenix's Desert Botanical Garden and Tucson's Tohono Chul Park.

Mary Griffin is a principal with Turnbull Griffin Haesloop Architects, in San Francisco, which is the successor firm to William Turnbull Associates and continues its legacy of designing residences, schools and sacred spaces. She recently contributed to the forthcoming book *William Turnbull, Jr.: Buildings in the Landscape*.

Darrel Morrison, FASLA, is a professor of landscape architecture in the School of Environmental Design at the University of Georgia. He is a long-time advocate of the use of native plants in designed landscapes, not only

for ecological reasons, but also to perpetuate, restore or reveal the unique character of places.

Laurie Olin is founding partner of the Olin Partnership and professor in practice at the University of Pennsylvania, Department of Landscape Architecture and Regional Planning. He has worked on urban redevelopment and urban park design and restoration projects throughout the U.S. and Europe, including the Battery Park City Esplanade and Bryant Park, and is author of *Across the Open Field: Essays Drawn from English Landscapes and Transforming the CommonPlace*. He studied architecture at the University of Washington.

Mitchell Schwarzer is Associate Professor of Architectural History and Theory at California College of Arts and Crafts, San Francisco. He is the author of *German Architectural Theory and the Search for Modern Identity, Architecture and Design: San Francisco* and numerous articles on historic preservation, landscape, aesthetics and art and architectural history.

Paul Shephard is an architect, teacher and writer living in London. He is currently a visiting professor at the University of Texas at Austin, School of Architecture. He lectures worldwide and has published two books, *What is Architecture?* and *The Cultivated Wilderness*. He is now working on a book about people and machines.

Daniel Winterbottom is an associate professor of landscape architecture at the University of Washington, where he initiated a landscape architecture design-build program, and principal in Winterbottom Design, a site design and planning firm in Seattle. His research interests include urban ecology and culture, community gardens, nature and its use in health care, and public art as infrastructure. He is author of *Wood in the Landscape*. He studied at Tufts University and Harvard's Graduate School of Design.

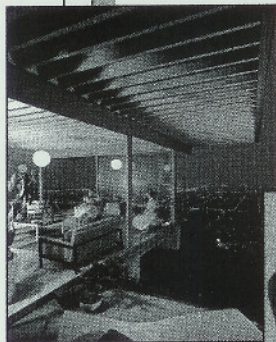
CALIFORNIA takes you places!

Landscapes of Desire

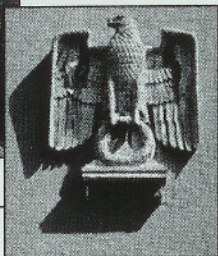
Anglo Mythologies of Los Angeles
WILLIAM ALEXANDER MCCLUNG

"McClung's sharp eye, and his ability to be both critic and analyst, combine to make this a book of real timeliness. It is unusual, and it is smart."

—William Deverell, author of
*Railroad Crossing:
Californians
and the Railroad,
1850-1910*
\$35.00 cloth



From *Landscapes of Desire*



From *Munich and Memories*

Munich and Memory

Architecture, Monuments, and the
Legacy of the Third Reich
GAVRIEL D. ROSENFELD

Munich, notorious in recent history as the capital of the Nazi movement, is the site of Gavriel Rosenfeld's stimulating inquiry into the German collective memory of the Third Reich. Rosenfeld shows, with the aid of a wealth of photographs, how the city's urban form developed after 1945 in direct reflection of its inhabitants' evolving memory of the Second World War and the Nazi dictatorship.

*Weimar and Now: German Cultural
Criticism*, \$45.00 cloth

The Place of Houses

CHARLES MOORE, DONLYN LYNDON,
GERALD ALLEN

With a new epilogue

"A wonderful book which is both mythic and poetic.... In Moore, Allen and Lyndon's book the ideal architect comes on as a modest and friendly fellow who pays very close attention to his client."

—Mildred F. Schmertz,
Architectural Record
\$22.50 paper



At bookstores or order (800) 822-6657

University of California Press

www.ucpress.edu